



EUROFLEX® VISUAL SYSTEM

Indoor solution for maximum freedom of design



EUROFLEX®

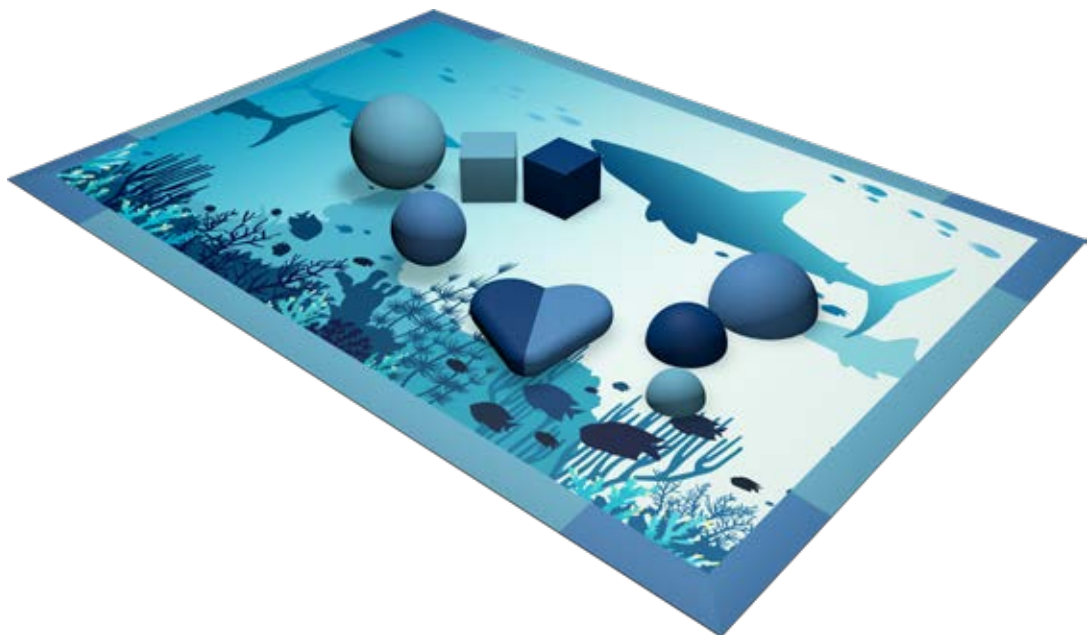


Impact protection slabs
with printed surface covering

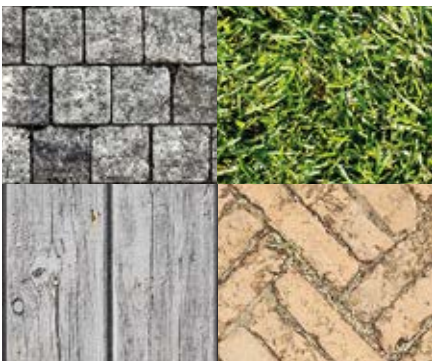
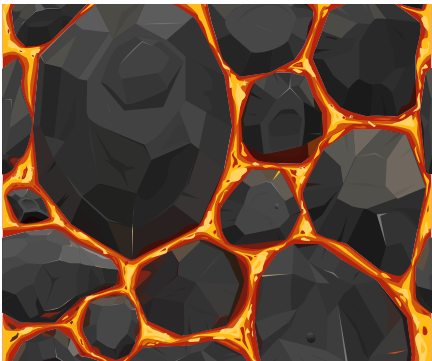
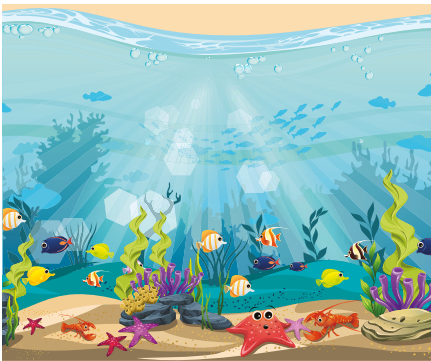
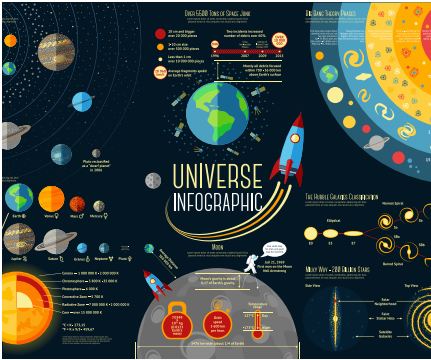


The best of both worlds

EUROFLEX® impact protection slabs have been proving their worth for many years thanks to their high impact protection values for children's playgrounds. Although our EPDM impact protection slabs and their various designs already offer numerous design possibilities, there are still limits. With our new EUROFLEX® Visual System you can now print individual designs with pixel precision - in virtually any shape and size! From motifs such as stones, lawns, wooden floors, sea and jungle to your own logos, corporate design colours or lines, everything is possible!



Examples (individual motifs, templates with flexible elements or textures)





FAQ – Frequently Asked Questions

Which impact protection slabs are suitable as substrate for the Visual System?

All SBR impact protection slabs of 30–80 mm can be used depending on the required fall height. The only difference is that the edges of the impact protection slabs are not chamfered when used under printed surface coverings. This makes it easier to create a completely smooth, jointless surface. The colour of the slabs does not matter as the surface is 100% opaque.

What material is the printed surface covering made of?

The surface covering is a 2 mm thick PVC floor. It is standardly divided into 2.0/3.0 m wide strips (max. 4 m possible).

The surface is **sealed ex factory**.

The product Visual System consisting of impact protection slabs and PVC surface covering is offered and supplied as a complete system by KRAIBURG Relastec.

Which motifs can be printed?

In principle, any motif can be printed on the surface covering. However, a high resolution of the motif is decisive. Mobile phone shots or shots with cameras are usually not sufficient.

Especially for larger areas, professionally created textures or vector graphics are recommended, which can be scaled to any size without loss of quality. In the picture gallery you will find numerous elements on various topics such as jungle, animals, sea, space or cities. We can provide you with these as vector graphics. Your advertising agency or marketing department

can change these at will or integrate only individual elements of it into your surface. We will be happy to send you detailed print data requirements on request.

Is the surface UV resistant?

According to DIN EN ISO 10581/ DIN EN ISO 105-B02, procedure 3, the printing of the floor provides a UV resistancy of >6, the best class.

What is the slip resistance of the surface?

The floor was tested with a high slip resistance value of R10 according to DIN 51130 with BGR181.

Which fire protection class is achieved?

The floor is hardly flammable. It is authorised for indoor areas in accordance to construction law.

Is it possible to install Visual System in an outdoor area?

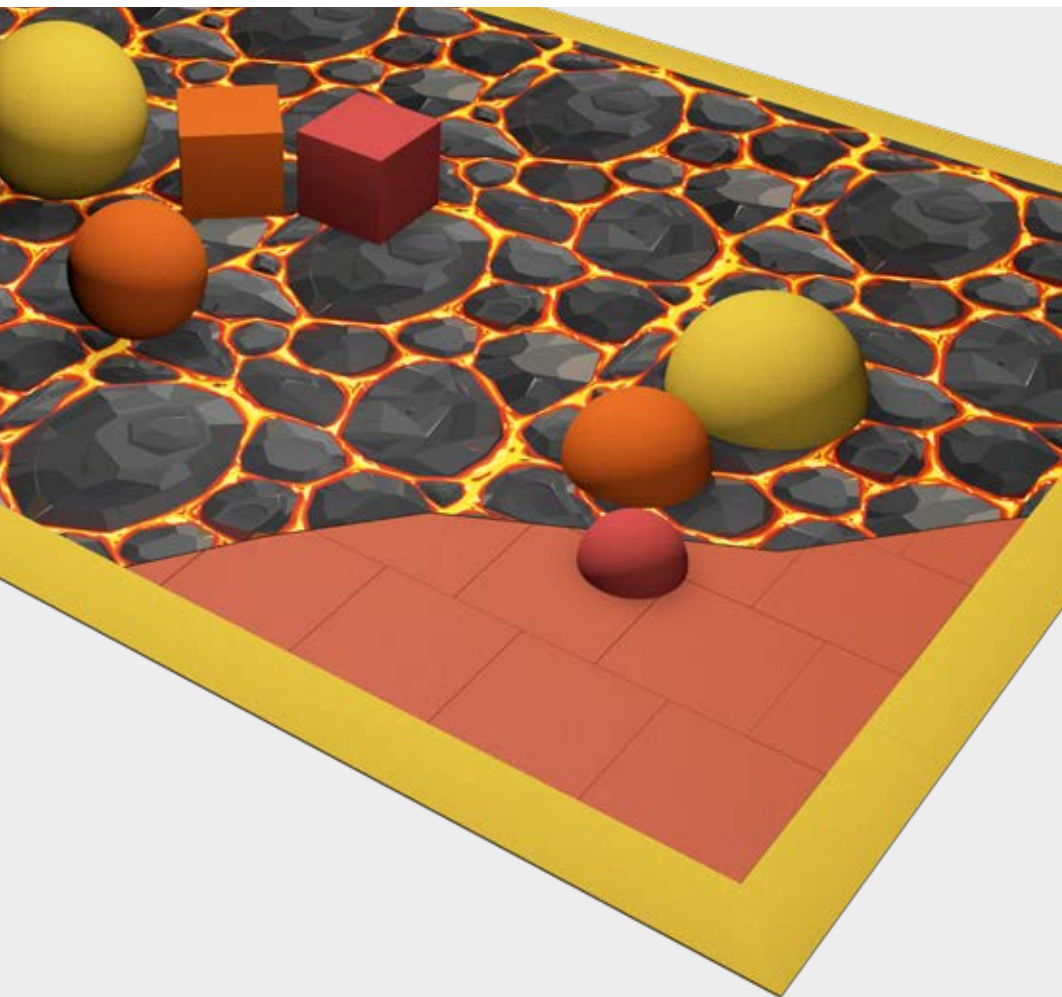
Usage in outdoor areas is not possible.

Can the Visual System be used multiple times?

Yes! The floor can be used as a temporary flooring solution – for instance on fairs – by fixating it with double-sided tape. In this way, the floor can be reused later in another place.

You can find a detailed installation instruction here:

www.kraiburg-relastec.com/euroflex/en/downloads



Impact protection slabs -
the ideal base for Visual System



Highest safety standards since more than 40 years!

EUROFLEX® Impact Protection Slabs guarantee the highest safety standard on playgrounds – for the past 40 years. They allow children to romp about happily, without risk of injury.

EUROFLEX® Impact Protection Slabs offer effective protection when children jump or fall to the ground by attenuating the impact and therefore reducing the risk of injury.

EUROFLEX® Impact protection slab SBR (without chamfers) & edge- and corner profiles

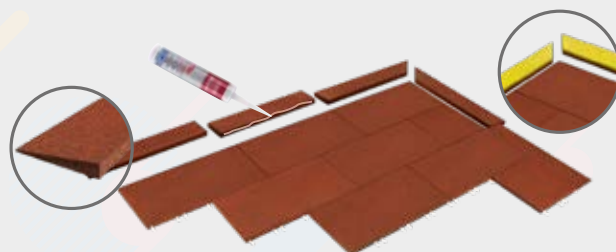
The shock absorption of EUROFLEX® Impact Protection Slabs provides safety without sacrificing problem-free use and durability. Impact protection slabs (without chamfers on the edges) provide the base under the printed surface. They are TÜV approved according DIN EN 1177:2018. Edge and corner profiles significantly improve safety around surfacing systems by reducing the danger of stumbling and allow access with wheel- and pushchairs. Just as the impact protection slabs, the edge- and corner profiles can also be used in conjunction with the Visual System.



Impact protection slab standard (without chamfered edges)

length / width	500 x 500 mm 1.000 x 500 mm (only for 40, 50 mm thickness)
fall heights	see table below
colours	red
other	pre-installed connector pins included

max. fall height [m]	thickness [mm]	dimensions [mm]	weight ca. [kg/pcs.]
1,00	30	500 x 500	5,2
1,20	40	500 x 500	6,5
1,20	40	1.000 x 500	13,0
1,50	50	500 x 500	7,5
1,50	50	1.000 x 500	15,0
1,60	55	500 x 500	8,1
1,70	60	500 x 500	9,0
2,10	70	500 x 500	10,4
2,40	80	500 x 500	12,0



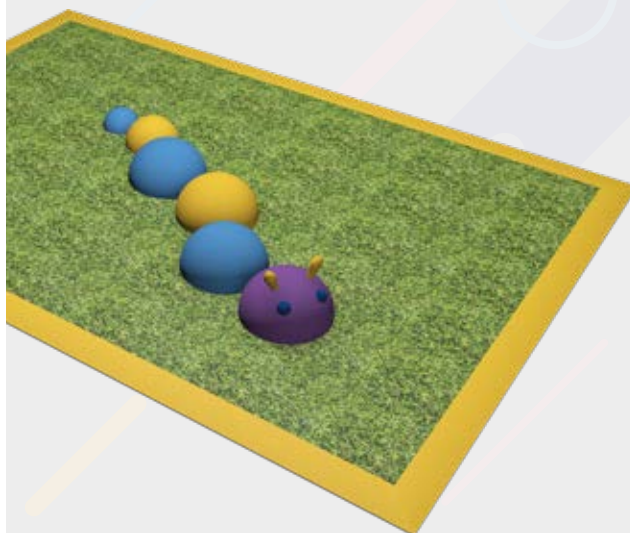
edge and corner profiles (also available with EPDM coating)

length / width	edge and corner profiles: 1.000 x 250 mm
heights	30/10, 40/10, 50/20, 70/20, 80/20, 90/20
colours	red



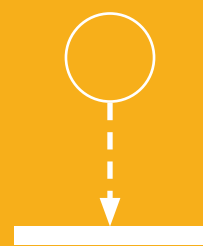
Accessibility

Thanks to our edge and corner profiles, all impact protection slabs can be installed barrier-free.





Fall heights & advantages



Tested quality - that is our promise!

The use of shock-absorbent floor systems is necessitated by the requirements of DIN EN 1177:2018. This standard requires shock-absorbent flooring for a fall height of 60 cm or more. The suitability of Impact Protection Slabs made of bonded, permanently elastic recycled rubber granules is documented by a test certificate. The impact attenuation is demonstrated by means of the HIC method.

All EUROFLEX® Impact Protection Slabs are tested in accordance with DIN EN 1177:2018 to determine the HIC value.



Tested Quality

ISO 9001 certified, Compliance with impact protection standards EN 1177:2018



High elasticity

for cushioning shocks / falls and for a pleasant walking sensation



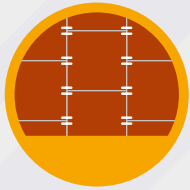
Easy cleaning

due to a seamless surface



Impact sound insulation

for a calm room ambience



Integrated connector pins

for higher dimensional stability and prevention of accidental displacement



High anti-slip properties

R10 due to surface covering



Great freedom for design

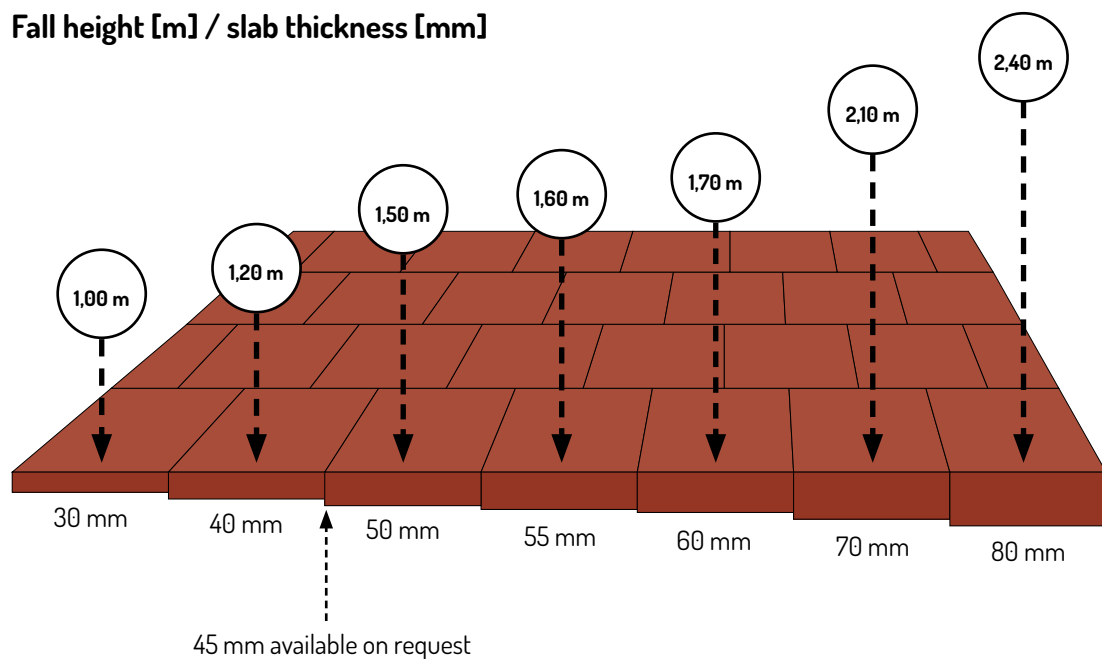
made possible by pixel-accurate, individual printing on the surface, edge- and corner profiles can be used, too



Wide range of peripheral accessories

balls, half balls, cube, stepper, mushrooms, animals

Fall height [m] / slab thickness [mm]



- 
- 🌿 We turn rubber materials into new raw materials and products, making a valuable contribution to waste reduction and the protection of the environment.
 - 🌿 We invest in innovative and environmentally friendly production methods and technologies.
 - 🌿 Our products are subject to continuous quality testing and further development, whereby environmental concerns are given priority. We are always on the lookout for even more environmentally friendly alternatives that enable us to further reduce emissions and protect resources.
 - 🌿 All employees of KRAIBURG Relastec undertake to implement sustainable practices in their daily work and to protect the environment wherever they can.
 - 🌿 We expect the same from our suppliers and constantly monitor their performance.

Environmental management at KRAIBURG Relastec

KRAIBURG Relastec is one of the best known global companies that specialise in the production of technical rubber materials from old tyres. As a recycling specialist, we have for many years been committed to the protection of the environment. Every year, we process and recycle about 85,000 tons of old tyres, closed-cell rubber and rubber production scrap. From these raw materials, we produce high-quality granules based on our internally developed formulations. These granules make up more than 90 % of the material used in our finished products. All our products are 100 % recyclable without loss of quality.

At KRAIBURG Relastec, protecting the environment is a strategic priority. We are convinced that sustainable growth is only achievable if we meet our responsibilities towards the environment. KRAIBURG Relastec has therefore adopted a very simple policy: Protecting the environment is part and parcel of what we do every day!

Our “pro environment” logo stands not only for 40 years of sustainable business practices that protect resources, but emphasises our commitment to product quality and continuous improvement for the protection of the environment beyond the statutory regulations.



Production loading address

KRAIBURG Relastec GmbH & Co. KG
Fuchsberger Straße 4
D-29410 Salzwedel

Sales office & marketing

KRAIBURG Relastec GmbH & Co. KG
Kehlsteinstraße 2
D-84529 Tittmoning



**IMPACT PROTECTION & PLAYGROUND ACCESSORIES
FOR PLAYGROUNDS AND MULTIPURPOSE SPORTS FACILITIES**

made from rubber granules

KRAIBURG Relastec GmbH & Co.KG
Fuchsberger Straße 4 · D-29410 Salzwedel

Sales:

Tel. +49 (0) 8683 701 -199 od. -156

Fax +49 (0) 8683 701 -4199 od. -4156

euroflex@kraiburg-relastec.com

www.kraiburg-relastec.com/euroflex/en

All rights reserved, all indications without engagement, subject to modifications.
© KRAIBURG Relastec GmbH & Co. KG 2019

